

LITHIUM/ SULFUR DIOXIDE PRIMARY BATTERY SYSTEM

BA-5598/U

NSN: 6135-01-034-2239

Physical Specifications

Weight (max):	1.5 lbs. 681 gr.
Weight of Li:	13 gr.
Dimensions:	Figure 1
Battery Case:	Plastic

Electrical Specifications

Construction: 5 cells connected in series. Series string is tapped as shown in connector detail to provide a nominal 3V output.

Voltage:	A ₁ Unit	A ₂ Unit
Nominal OCV:	3.00 volts	15.00 volts
Max. OCV:	3.05 volts	15.25 volts
Nominal:	2.80 volts	14.00 volts
Cut-off:	2.00 volts	10.00 volts

Rated Capacity (at 500 ma discharge):	70 F (21 C):	8.0 Ah
	-20 F (-29 C):	5.3 Ah

Fuse: A slow blow 2.25 Amp non-replaceable fuse is incorporated in the negative leg and the +A₁ leg.

High Temperature Switch: A normally closed high temperature switch or thermal fuse is incorporated in the negative leg of the series string of cells. It will open at 91 ± 4 C (189 -196 F) and is non-resettable and non-replaceable.

Diode: A diode is wired in series with the A₂ section to prevent charging or flow of current into the battery.

CDD: (Optional) A device consisting of a manually activated switch and resistor designed to completely discharge the battery to 0 volts is built into the battery.

Mating Connector: General connector GC-075

Specifications: XXXXXXXXXX
Saft Specifications

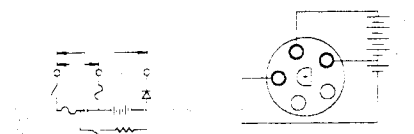
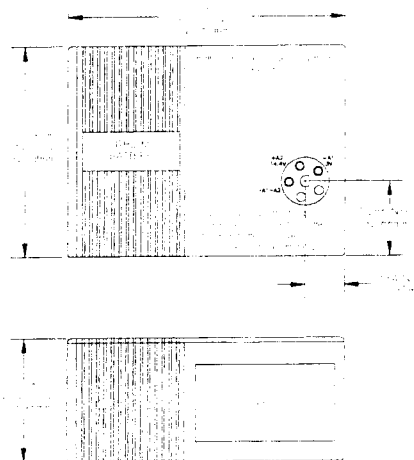
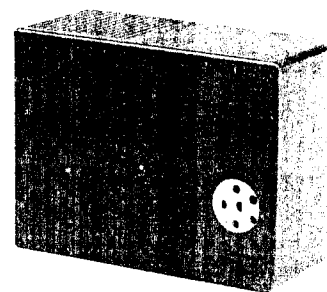


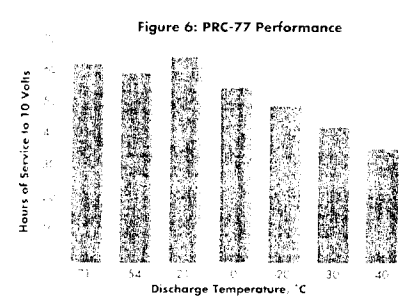
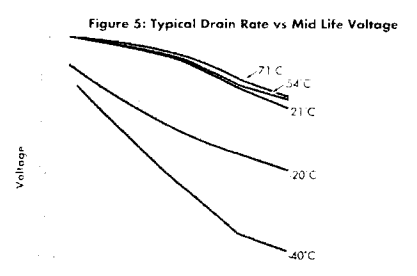
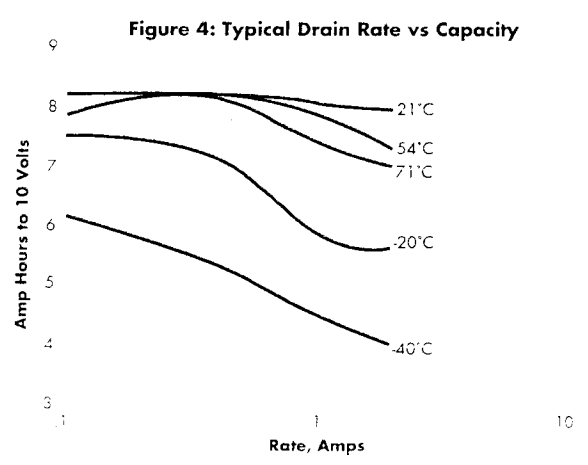
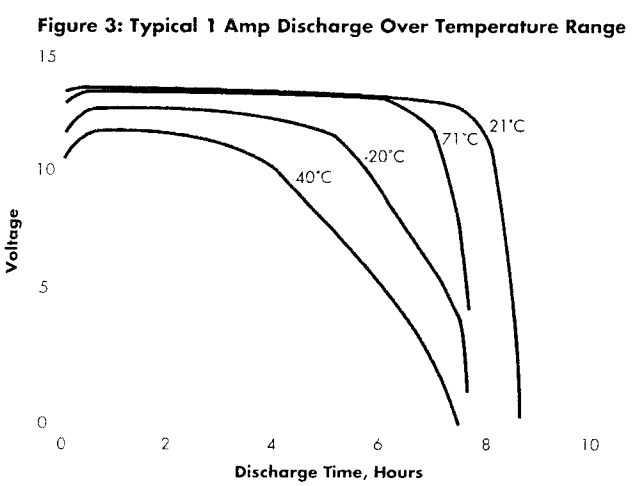
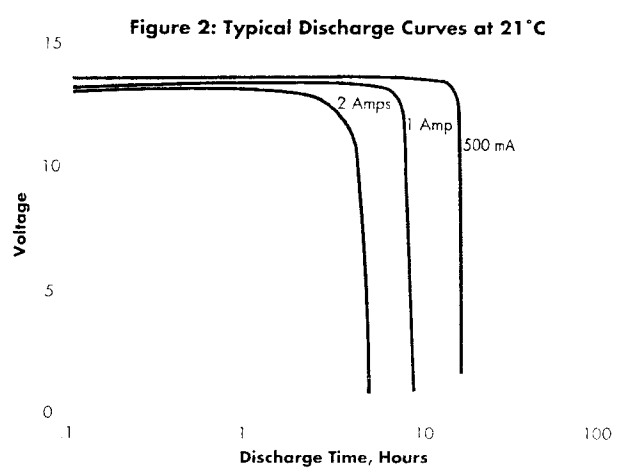
Figure 1. Overall Dimensions



BA-5598

Typical Applications

AN/PRC-25	Radio
AN/PRC-77	Radio
KY-38	Radio
AN/PPS-5	Radar Set
AN/PDR-10	Direction Finding
AN/PSQ-4	Intrusion Detection Set



SAFT America Inc.
 Lithium Battery Division
 313 Crescent Street • Valdeese, NC 28690
 Tel: (704) 874-4111 • Fax: (704) 874-2431